



[www.automaterp.com](http://www.automaterp.com)

# ERP Software

ERP For Small & Medium Enterprises

**AUTOMAT**<sup>™</sup>

The most effective and efficient way to run your business.

# AUTOMAT ERP - INTRODUCTION

- A SIMPLE YET COMPREHENSIVE BUSINESS TOOL FOR SMALL AND MEDIUM ENTERPRISES (SMEs)
  - Empowers Business to grow fast and profitable.
  - Apt for Business like Trading, Distribution, Production & Manufacturing firms.
  - Integration provision with other Enterprise Solutions.
- **Advantages of ERP**
  - ✓ Eliminate costs & inefficiencies
  - ✓ Improve operational efficiency
  - ✓ Enhance productivity, customer satisfaction flexibility and control
  - ✓ Improve communication and collaboration
  - ✓ Leverage IT infrastructure and information assets

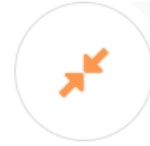
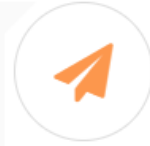
# AUTOMAT ERP - BENEFITS

## Your ERP. Your Way!

**ERP as per your need** - Start with minimum modules and scale it up as per your business needs.

**Complete Mobility** - Access your software from any smart devices.

**Choice of Server** - Available in On-premise or Cloud deployment.



## ERP For SMEs

**LESS CAPEX & OPEX** - Low cost and simple licensing model.

**Don't change your profitable business process** - An adaptable ERP software for growing business needs.

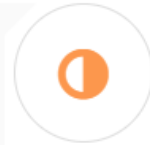
**ERP as you grow** - The most comprehensive ERP software for SMEs.

## No More Waiting To Have Your Business Under Control.

**No prequalification needed to use the ERP** - Easy to use .

**Start in less than 24 hours** - Rapid Implementation with option to migrate your existing data.

Available in Browser or Desktop Application.



## Empowers Business To Grow Fast And Profitable.

**Specialist in your industry** - Apt for Business like Trading, Distribution, Production & Manufacturing firms.

**Hire a Technology Partner** - Single vendor solution for Server & Hosting, Web & Digital Marketing, Technology Consultancy.

**IT Consulting by expert** - Dr. RM Sudhakar shall personally consult your organization (fixed hour as part of the solution) on better implementation of IT (Information Technology).

# AUTOMAT ERP - MODULES

SUITES	MODULES				
Finance	Accounts	Banking	Taxations	Costing	
Purchase	Purchase Order	Procurement	Comparison	Import	
Sales	Marketing	Order Process	Pricing	Opportunity	Export
Inventory	Product	Stores	Logistics	Internal Branch Order	
Manufacturing	Production	Process	Sub Contract	Quality	

## EDITIONS

### DESKTOP APPLICATION:

AUTOMAT ERP BUSINESS  
AUTOMAT ERP PROFESSIONAL

### BROWSER APPLICATION:

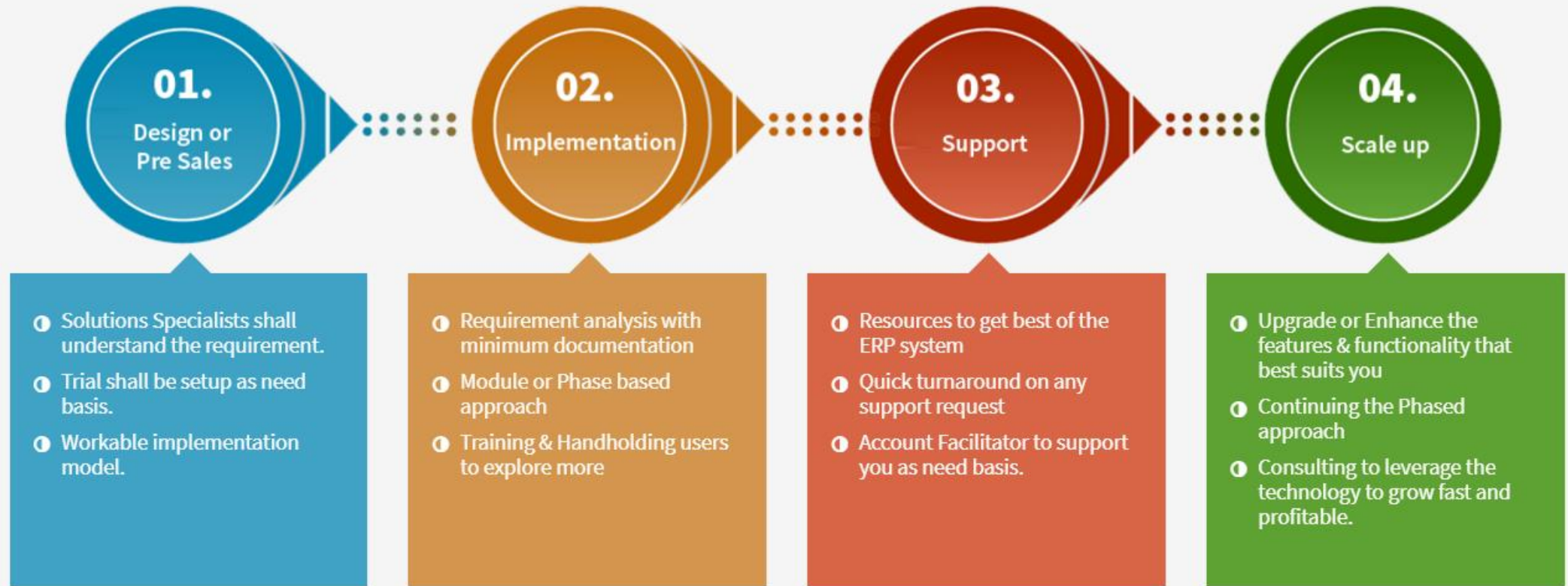
AUTOMAT ERP CLOUD (SAAS MODEL)  
AUTOMAT ERP ENTERPRISE



# AUTOMAT ERP – KEY FUNCTIONALITY

Finance	Purchase	Sales	Inventory	Manufacturing
<ul style="list-style-type: none"> <li>• budget and analysis</li> <li>• general ledger and journal entries</li> <li>• accounts payable and receivable</li> <li>• debit &amp; credit note</li> <li>• reconcile financial accounts</li> <li>• define &amp; manage tax parameters</li> <li>• forecast and control of banking</li> <li>• petty cash management,</li> <li>• financial statement and reporting</li> <li>• cost accounting</li> </ul>	<ul style="list-style-type: none"> <li>• organize &amp; maintain detailed vendor information</li> <li>• maintain a bid matrix, request for quote and comparison</li> <li>• purchase orders</li> <li>• manage procurement &amp; inspect vendor shipments</li> <li>• GRN (goods receipt note) &amp; returns</li> <li>• manage sub contracting job</li> <li>• import management</li> <li>• forecasting &amp; MRP (material requirement planning)</li> </ul>	<ul style="list-style-type: none"> <li>• inquiry, quote, follow-up &amp; negotiation</li> <li>• sales orders</li> <li>• proforma invoices, sales invoices &amp; returns</li> <li>• opportunity management</li> <li>• maintain price matrices</li> <li>• price calculation tool</li> <li>• ship finished product</li> <li>• manage Export document and transactions</li> </ul>	<ul style="list-style-type: none"> <li>• items, products &amp; BOM</li> <li>• manage detail inventory records &amp; stock movement</li> <li>• maintain optimal inventory levels</li> <li>• simplify inventory transactions</li> <li>• ship and receive goods</li> <li>• track material location / lot information</li> <li>• track serial numbers, utilize bar coding, &amp; perform cycle counting and physical inventories.</li> <li>• define &amp; manage assets</li> <li>• Internal branch or warehouse transfer</li> </ul>	<ul style="list-style-type: none"> <li>• MRP II (manufacturing resource planning)</li> <li>• production order</li> <li>• batch management</li> <li>• plan and schedule production with process</li> <li>• manage material and equipment capacity</li> <li>• track &amp; manage outsourcing / sub contract with or without raw material</li> <li>• quality: Inspect incoming &amp; outgoing , on process</li> <li>• excise trading &amp; manufacturing with statutory reports</li> </ul>
<ul style="list-style-type: none"> <li>• perform drill-down analysis</li> <li>• multicurrency support</li> </ul>	<ul style="list-style-type: none"> <li>• maintain a complete history of activities</li> <li>• attachment provision for transactions</li> </ul>	<ul style="list-style-type: none"> <li>• follow ups with individual dashboard</li> <li>• provision to duplicate &amp; revise the transactions</li> </ul>	<ul style="list-style-type: none"> <li>• transactions analysis &amp; strike rate reports</li> <li>• user privilege based access</li> </ul>	<ul style="list-style-type: none"> <li>• automate frequently performed tasks</li> <li>• provision to export data to xls</li> </ul>

# OUR APPROACH

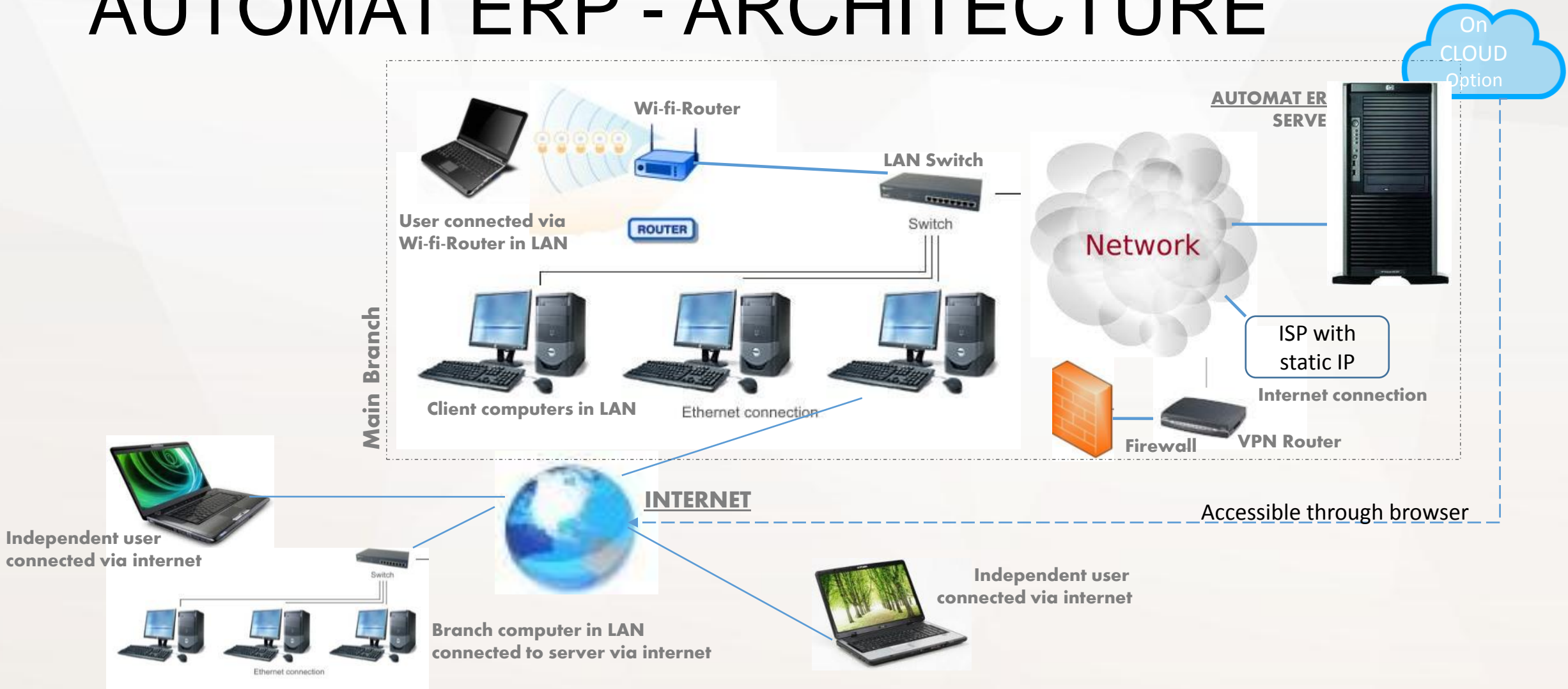


# AUTOMAT ERP - IMPLEMENTATION

- RAPID Implementation model
- Remote installation & support model
- Virtual Class Room & Hands on Training
- Detailed Documentation
- Access to Customer Support Website
- Existing data migration & support
- Works on a minimum configuration computer #
- Accessible on Mobile Devices \*

\* Browser Version

# AUTOMAT ERP - ARCHITECTURE



Legend: LAN – Local Area Network; ISP – Internet Service Provider;



# AUTOMAT ERP - BACKGROUND

- A Technological Company – EBSL Group.
- Specialized in Trading and Manufacturing Solutions.
- Consulting Based Approach.
- Worked for Diverse Industries.



**Microsoft**

**AUTOMAT**<sup>™</sup>

**SMART BUILDINGS**  
[www.automat.co.in](http://www.automat.co.in)

**SMART HOME**  
[www.homeautomat.in](http://www.homeautomat.in)

**CLOUD SOLUTIONS**  
[www.automatcloud.com](http://www.automatcloud.com)

**SME ERP**  
[www.automaterp.com](http://www.automaterp.com)

Since:  
**16 years**

Registered office:  
**Bangalore**

Presence:  
**India, Singapore**

Clients:  
**500+ across Continents**

Mission  
**deliver benefits.**

Vision  
**Proficient & Reliable Partner.**

# Thank You

[www.automat.co.in](http://www.automat.co.in) | [www.automaterp.com](http://www.automaterp.com)

[info@automat.co.in](mailto:info@automat.co.in), +91 80 41127529

Dr. RM Sudhakar, Ph.D.

+91 98867 95676

Chat: [rm.sudhakar](#) (skype / gtalk)

EBSL Group, AUTOMAT,

No. 2453, 2nd Floor, 9 Main, 17 E Cross, BSK  
2 Stage, Bangalore - 560070, INDIA

Look forward for  
the opportunity  
to work with you.